

Importing csv data in Gephi

Clément Levallois

2017-02-03

Table of Contents

Importing an existing network file	1
Importing nodes with labels and their relations: simplest version	1
1. labels containing commas in them will not work.	3
2. labels containing double quotes " " in them will not work.	4
Importing more than labels: nodes and edges attributes	6
Memo card	9
(to be continued)	10
More tutorials on importing data to Gephi	10
the end	10



Importing an existing network file

Gephi handles the import of network files in a variety of formats:

	Edge List/Matrix Structure	XML Structure	Edge Weight	Attributes	Visualization Attributes	Attribute Default Value	Hierarchical Graphs	Dynamics
CSV	Yes	Yes						
DL Ucinet	Yes		Yes					
DOT Graphviz		Yes		Yes				
GDF		Yes	Yes	Yes	Yes			
GEXF		Yes	Yes	Yes	Yes	Yes	Yes	Yes
GML		Yes	Yes	Yes	Yes			
GraphML		Yes	Yes	Yes	Yes	Yes		
NET Pajek	Yes		Yes	Yes				
TLP Tulip								
VNA Netdraw		Yes	Yes					
Spreadsheet*			Yes	Yes				Yes

Figure 1. file formats supported by Gephi. Source: gephi.org

To import any of these files, just choose the **File** → **Open** menu

Importing nodes with labels and their relations: simplest version

(looking for the complete, full featured csv import version? [skip to here.](#))

The easiest is probably to just have a text file like this one:

Source,Target ①
Jeremy,Jennifer
Valerian,Jeremy

① This line is mandatory. Don't put a space between the comma and "Target"

Just write this in a text editor and save it as a file `example.txt`

To import this file in Gephi, go to `File→Import Spreadsheet`. Then in the window:

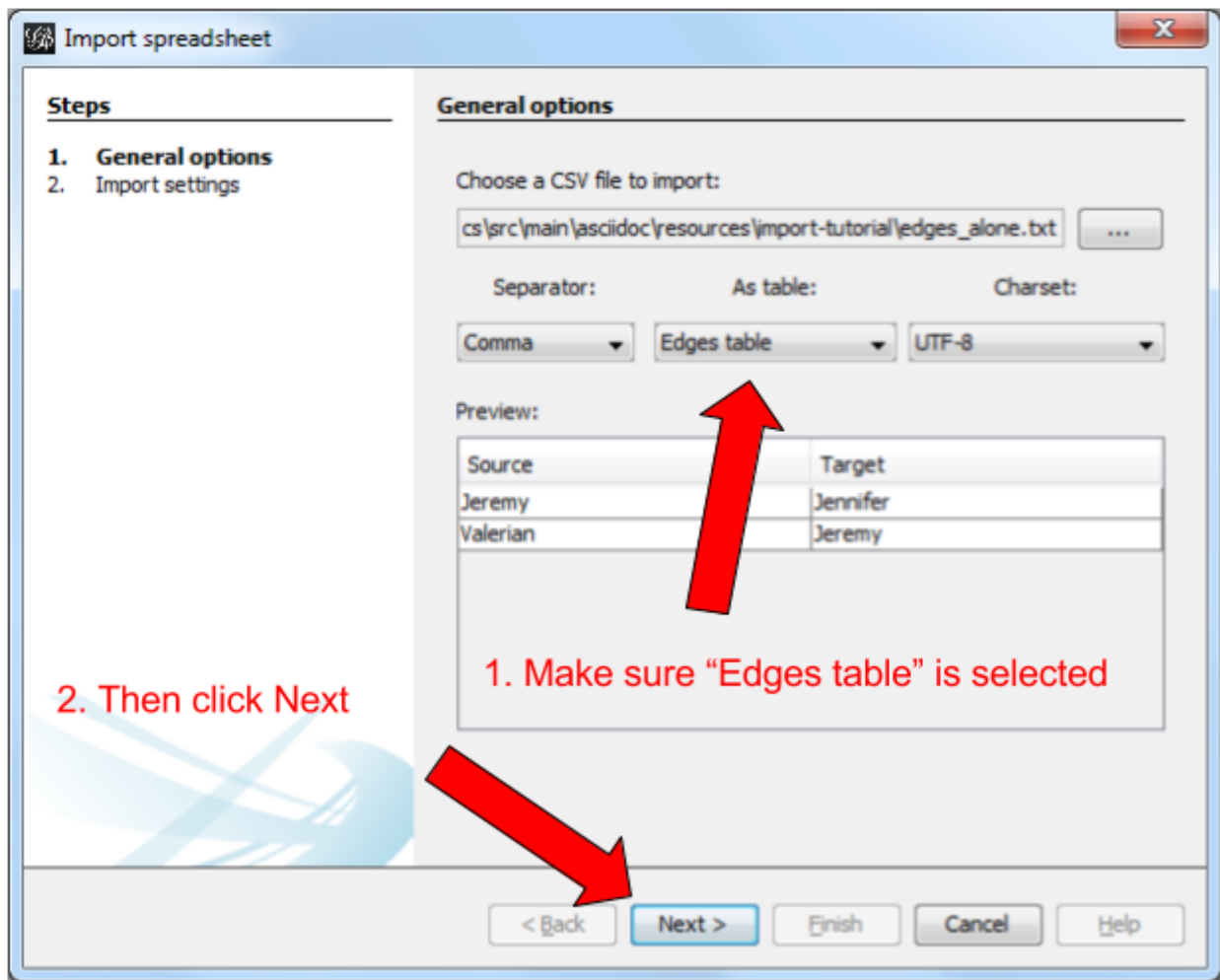


Figure 2. Importing nodes with labels and their relations

In this window, make sure the box "Create missing nodes" is checked:

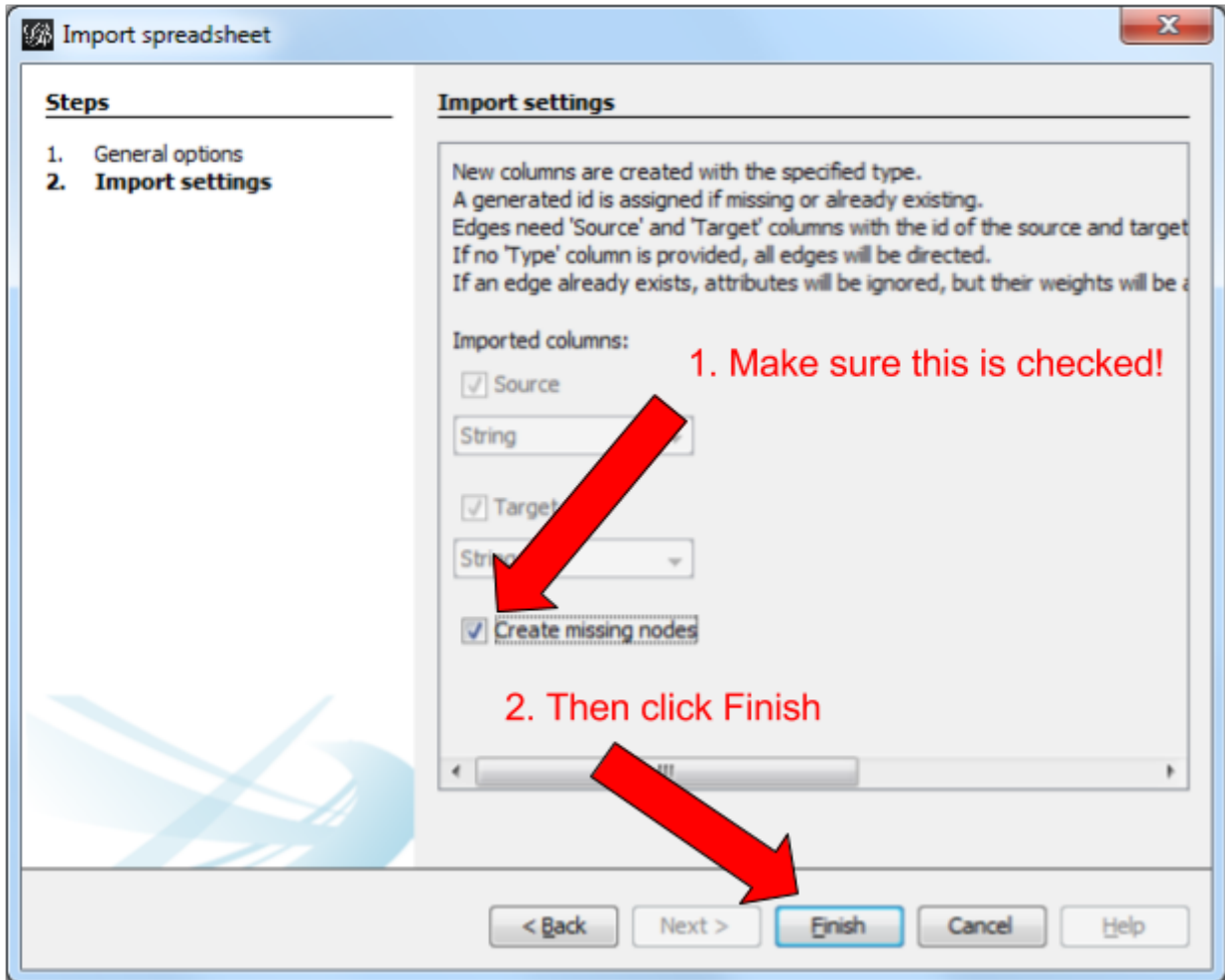


Figure 3. Second screen

Let's look again at the simple text file we used:

```
Source,Target  
Jeremy,Jennifer  
Valerian,Jeremy
```

There are 2 issues and several missing features, listed below:

1. labels containing commas in them will not work.

Imagine our characters have first names and last names separated by a comma:

Dubois, Jeremy

Rodriguez, Valerian

This will look like:

```
Source,Target
Dubois, Jeremy,Jeremy,Jennifer
Rodriguez, Valerian,Dubois, Jeremy
```

Note that we have 3 commas per line, instead of one! In this mess, Gephi will not detect where the node labels start and end. The import will break.

The proper solution is to put node labels inside **double quotes**:

```
Source,Target
"Dubois, Jeremy","Jeremy,Jennifer"
"Rodriguez, Valerian","Dubois, Jeremy"
```

Be careful to use these straight " " double quotes, not the curvy ones: “ ” which French keyboards sometimes have.

2. labels containing double quotes " " in them will not work.

Example: let's imagine that one of our characters has a middle name: Jeremy "Danger" Dubois. Our text file will look like:

```
Source,Target
"Dubois, Jeremy "Danger"" ,"Jeremy,Jennifer"
"Rodriguez, Valerian","Dubois, Jeremy "Danger""
```

These extra " " will make the Gephi import break:

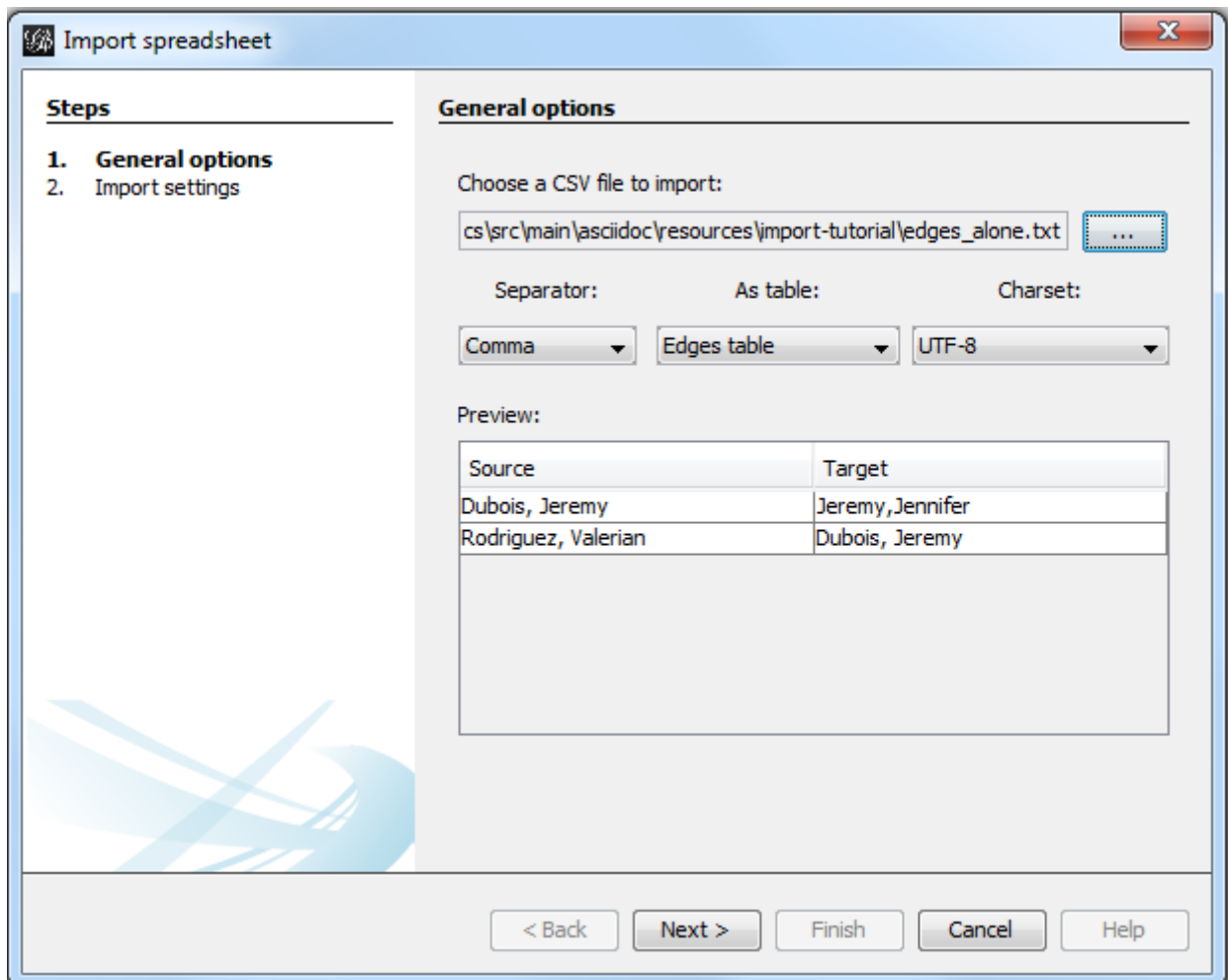


Figure 4. The import bugs - the middle name has disappeared

The solution consists in **adding an extra double quote in front of the double quotes**. Our text file will look like:

```
Source,Target
"Dubois, Jeremy ""Danger""", "Jeremy, Jennifer"
"Rodriguez, Valerian", "Dubois, Jeremy ""Danger"""
```

This time, Gephi imports the network correctly:

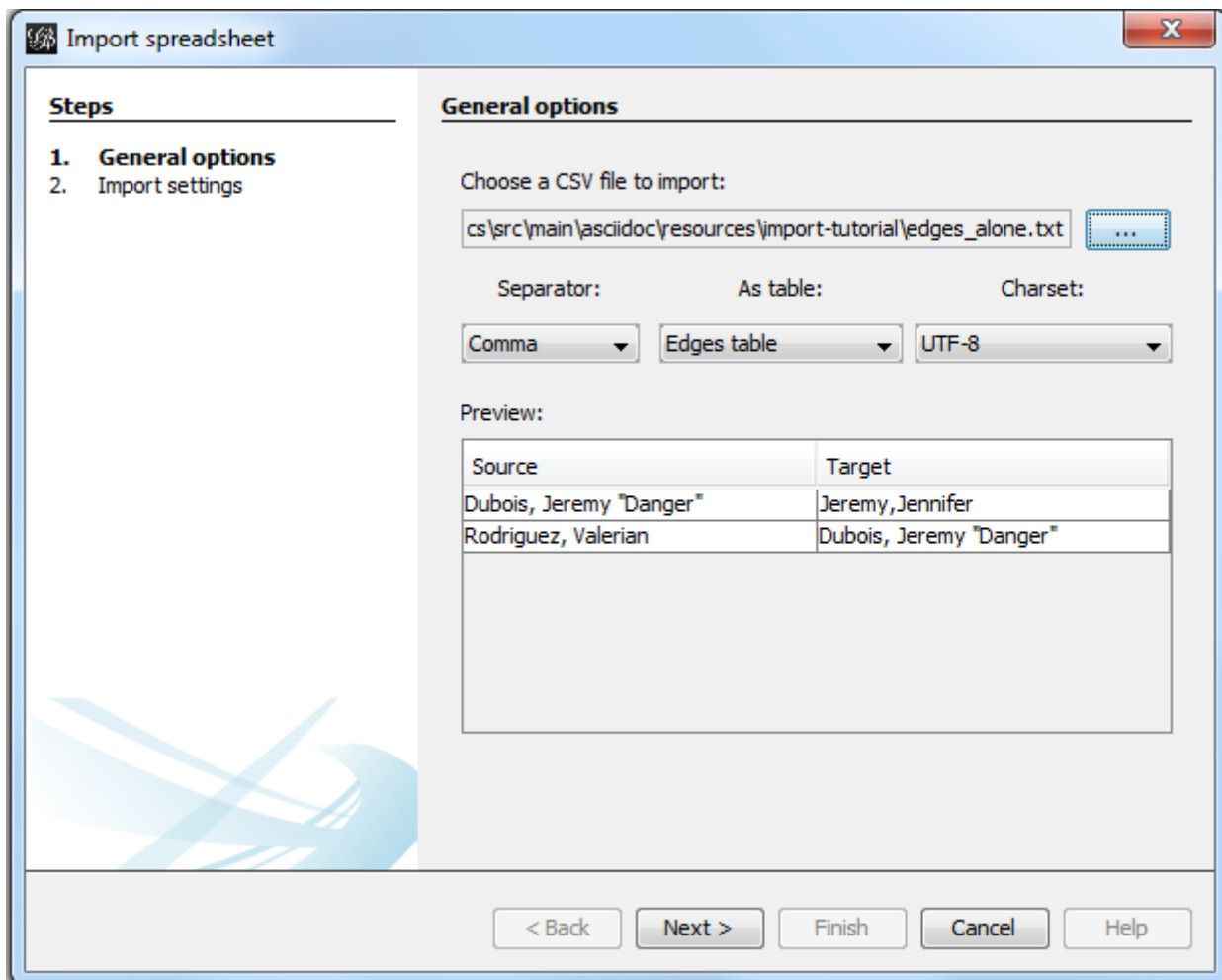


Figure 5. Importing node labels containing double quotes

Importing more than labels: nodes and edges attributes

To import attributes we will need to proceed differently.

We need 2 text files: one for the list of nodes, one for the list of relations (edges)

An example file with a list of nodes:

```
Id,Label,Date of Birth,Place of Birth,Years of experience,Rating ①
3,"Dubois, Jeremy ""Danger""",17/09/1980,"Paris",8,9.27
1,"Jeremy, Jennifer",25/03/1978,"Tampa",8,4.34
45,"Rodriguez, Valerian",30/04/1985,"Berlin",5,6.66
```

① Nodes **must** have at least an Id and a Label. Don't put spaces after the commas

An example file with a list of edges:

Source,Target,Weight,Type,Where first met ①
1,45,3,"undirected",London ②

- ① Edges **must** have at least a Source and Target. Other fields are optional.
- ② "undirected", the alternative is "directed". Directed edges have arrow heads.

Let's import the list of nodes first. [File](#) → [Import Spreadsheet](#)

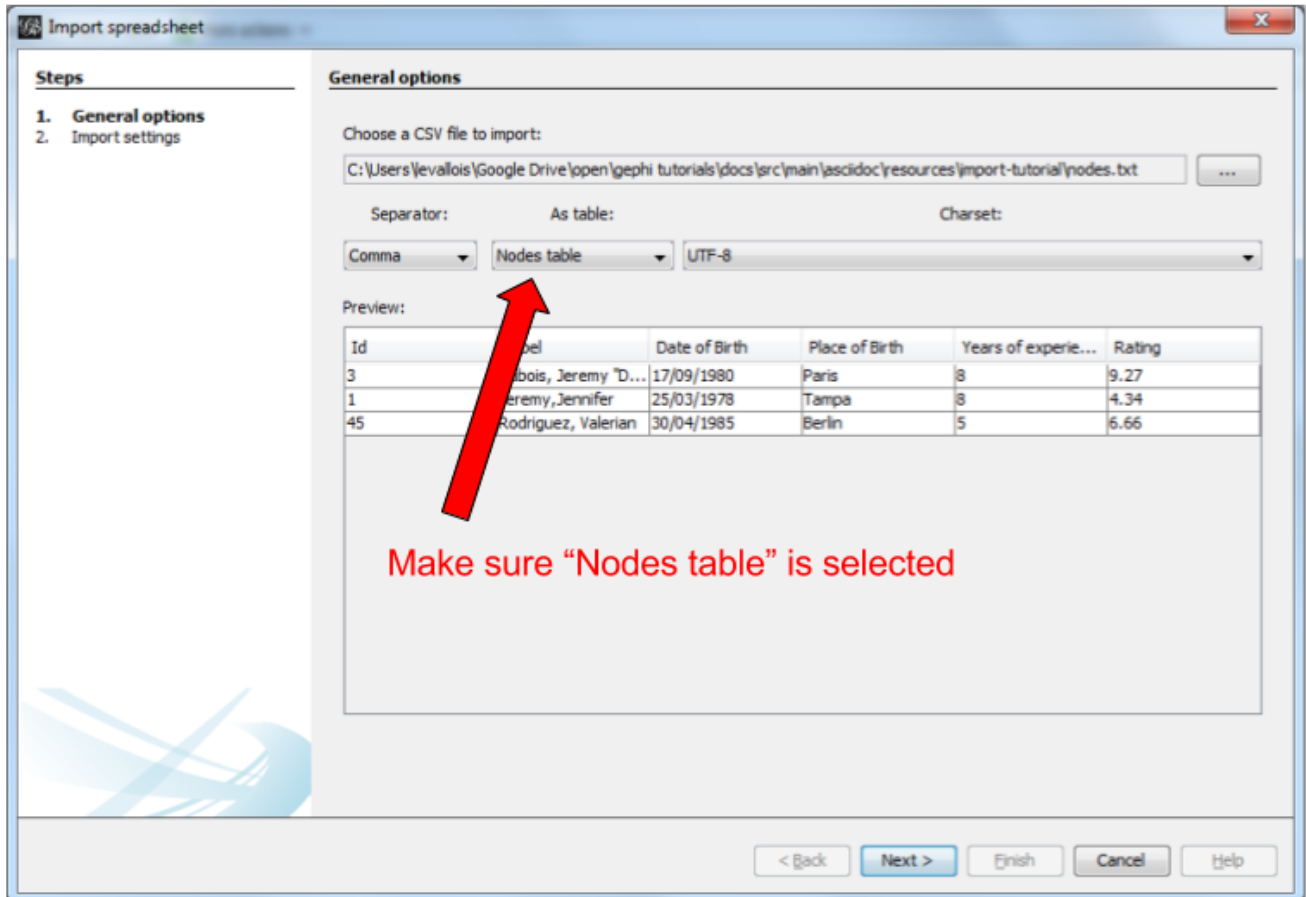


Figure 6. Importing a list of nodes with attributes

in the next screen, we must be careful with a couple of things:

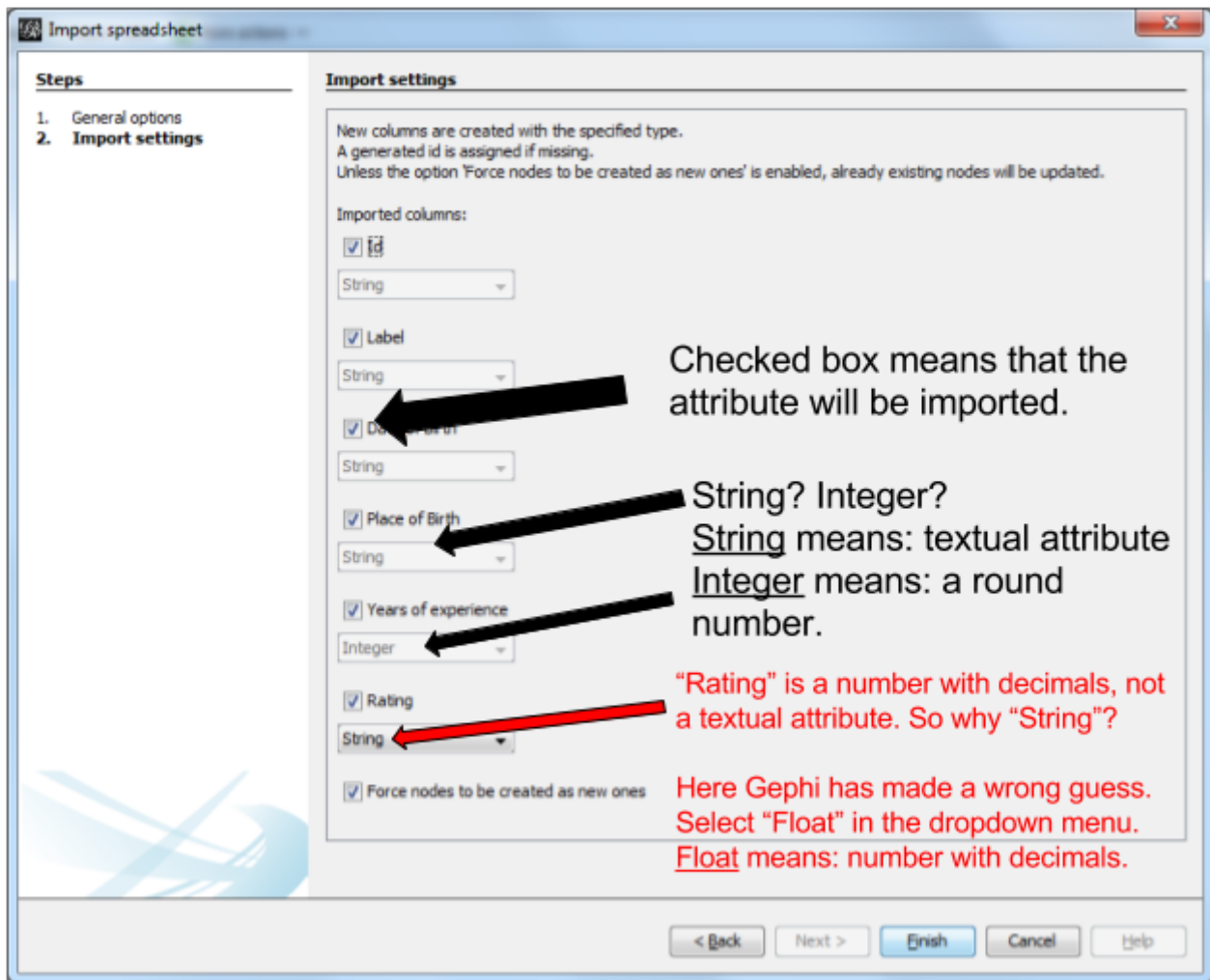


Figure 7. The attributes of the nodes

Then we can import the file with the list of relations. **File** → **Import Spreadsheet**

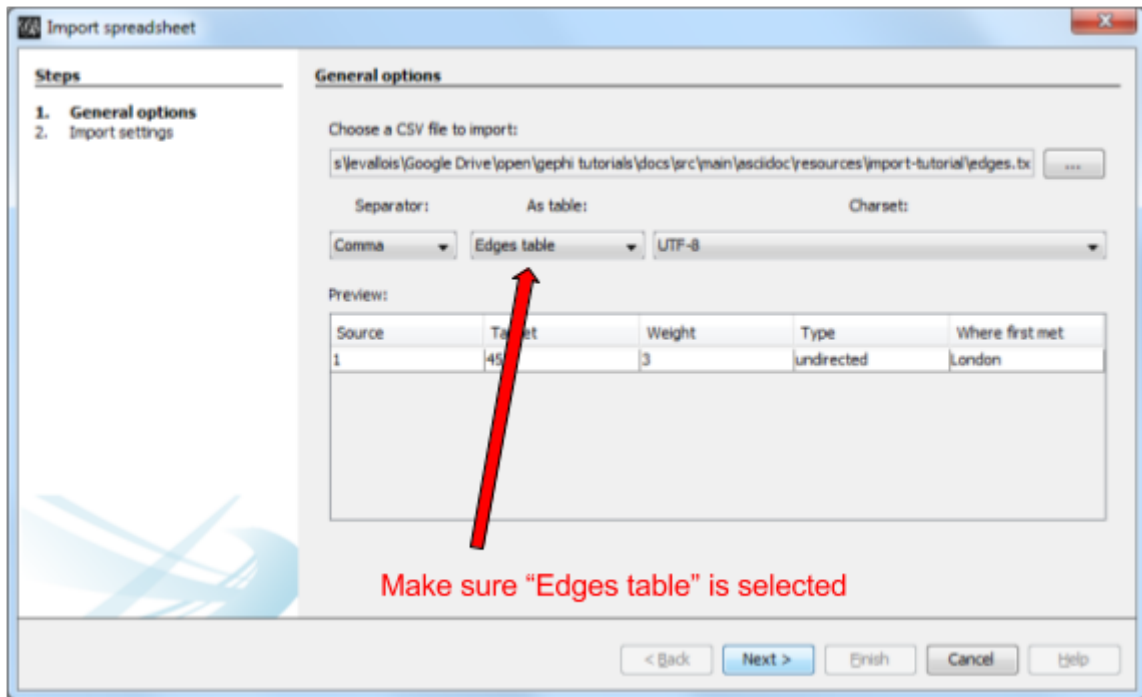


Figure 8. Importing a list of edges with attributes

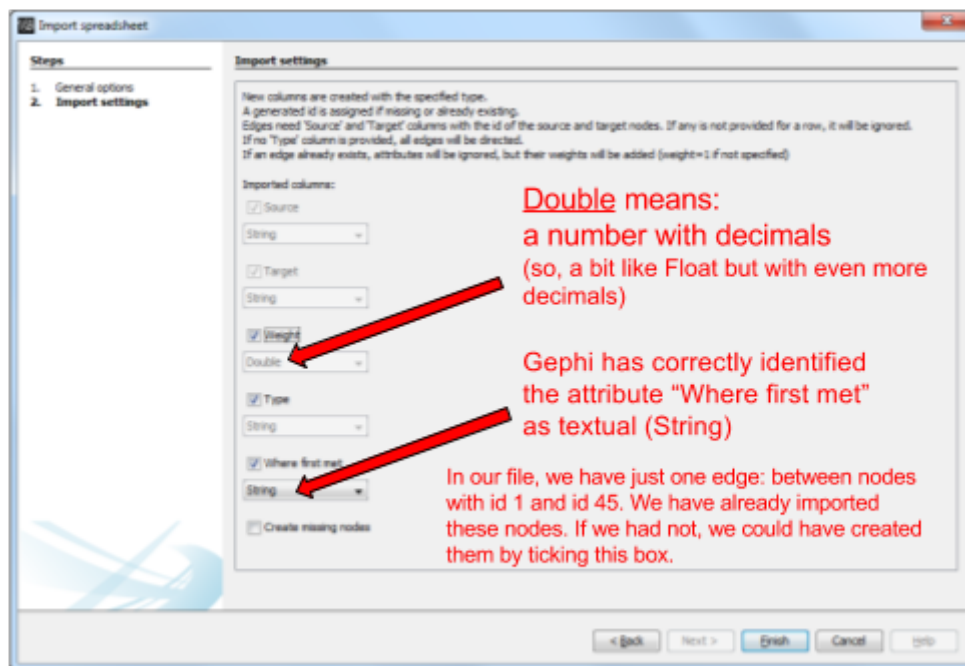


Figure 9. The attributes of the edges

Memo card

Nodes

- header must be at least **Id, Label**

Edges

- header must be at least **Source, Target**
- To have an attribute for the "thickness" or "strength" of a relation, this attribute must be called "Weight".
- Want arrows on your links? Add an attribute "Type", with value "Directed"
- Don't want arrows? Add an attribute "Type", with value "Undirected"

Types of attributes: which to choose?

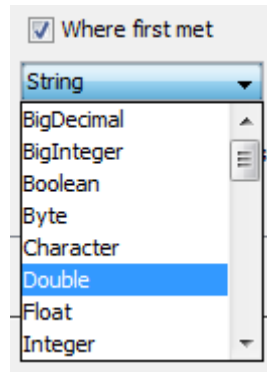


Figure 10. Kinds of attributes

- Textual attribute: **String**. Nodes sharing the same textual value can be colored the same, or filtered together...
- Numerical attribute: **Integer**, **Double** or **Float**. Nodes can be resized according to their value, or colorized in a gradient. Filters can be applied based on the range of values.
- Boolean attribute: just a **true** or **false** value. Useful for filtering out some nodes which are true or false on some parameter.
- Other types of attributes: not needed for the moment.

(to be continued)

More tutorials on importing data to Gephi

- [The Gephi wiki on importing csv](#)
- [Video "How to import a CSV into Gephi" by Jen Golbeck](#)

the end

Visit [the Gephi group on Facebook](#) to get help,

or visit [the website for more tutorials](#)